



**India Meteorological Department
(Ministry of Earth Sciences)**

BULLETIN NO. 10 (BOB/08/2022)

TIME OF ISSUE: 0200 HOURS IST

DATED: 22.11.2022

FROM: INDIA METEOROLOGICAL DEPARTMENT (FAX NO. 24643965/24699216/24623220)

TO: CONTROL ROOM, NDM, MINISTRY OF HOME AFFAIRS (FAX.NO. 23093750)

CONTROL ROOM NDMA (FAX.NO. 26701729)

CABINET SECRETARIAT (FAX.NO.23012284, 23018638)

PS TO HON'BLE MINISTER FOR S & T AND EARTH SCIENCES (FAX NO.23316745)

SECRETARY, MOES (FAX NO. 24629777)

H.Q. (INTEGRATED DEFENCE STAFF AND CDS) (FAX NO. 23005137/23005147)

DIRECTOR GENERAL, DOORDARSHAN (23385843)

DIRECTOR GENERAL, AIR (23421105, 23421219)

PIB MOES (FAX NO. 23389042)

UNI (FAX NO. 23355841)

D.G. NATIONAL DISASTER RESPONSE FORCE (NDRF) (FAX NO. 26105912, 2436 3260)

DIRECTOR, PUNCTUALITY, INDIAN RAILWAYS (FAX NO. 23388503)

CHIEF SECRETARY, ANDAMAN & NICOBAR ISLANDS (FAX NO. 03192- 232656)

CHIEF SECRETARY, GOVT. OF ANDHRA PRADESH (FAX NO. 0863-2441029, 08645-246600)

CHIEF SECRETARY, GOVT. OF TAMIL NADU (FAX NO. 044-25672304)

CHIEF SECRETARY, GOVT. OF PUDUCHERRY (FAX NO. 0413-2337575, 2334145)

Sub: Depression over Southwest and adjoining Westcentral Bay of Bengal

The Depression over Southwest and adjoining Westcentral Bay of Bengal moved west-northwestwards with a speed of 5 kmph during past 6 hours and lay centred at 2330 hours IST of 21st November, 2022 over the same region, near latitude 13.0° N and longitude 81.7° E, about 160 km east of Chennai, 245 km east-southeast of Nellore, 360 km south-southeast of Machilipatnam and 410 km north-northeast of Jaffna (Sri Lanka).

Continuing to move west-northwestwards towards south Andhra Pradesh-North Tamilnadu-Puducherry coasts, it is likely weaken gradually into a well-marked low pressure area during next 12 hours.

Warnings:

(i) Rainfall (warning graphics enclosed)

- ❖ Light to moderate rainfall at many places with isolated heavy rainfall is very likely over North Tamilnadu-Puducherry and south coastal Andhra Pradesh & adjoining Rayalaseema on 22nd November and light to moderate rainfall at a few places over North coastal Andhra Pradesh during the same period.
- ❖ Light to moderate rainfall at many places is likely over North Tamil Nadu-Puducherry, South Coastal Andhra Pradesh and Rayalaseema on 23rd November.

(ii) Wind warning:

- ❖ **Squally wind speed reaching 45-55 kmph gusting to 65 kmph is likely to prevail over Southwest and adjoining Westcentral Bay of Bengal and along & off Andhra**

Pradesh, Tamil Nadu, Puducherry and Sri Lanka coasts till 22nd November morning and decrease gradually thereafter becoming 30-40 kmph gusting 50 kmph by 23rd November morning.

- ❖ **Squally weather with wind speed reaching 40-45 kmph gusting to 55 kmph is likely to prevail over Gulf of Mannar on 22nd November and decrease gradually thereafter.**

(iii) Sea condition

- ❖ **Sea condition will be rough to very rough over Southwest and adjoining Westcentral Bay of Bengal and along & off Andhra Pradesh, Tamil Nadu, Puducherry, Sri Lanka coasts till 22nd November morning and improve gradually thereafter becoming rough to moderate by 23rd November morning.**
- ❖ **Sea condition will be rough over Gulf of Mannar on 22nd November and improve gradually thereafter.**

(iv) Fishermen Warning

Fishermen are advised not to venture into Southwest and adjoining Westcentral Bay of Bengal, Gulf of Mannar and along & off Andhra Pradesh, Tamil Nadu, Puducherry, Sri Lanka coasts till 22nd November.

The system is under continuous surveillance and the next message will be issued at 0830 hours IST of today, the 22nd November, 2022.

(Shashi Kant)
Scientist - C, Cyclone Warning Division, New Delhi

Copy to: ACWC Kolkata/ ACWC Chennai/ CWC Bhubaneswar/CWCVisakhapatnam/MO Port Blair

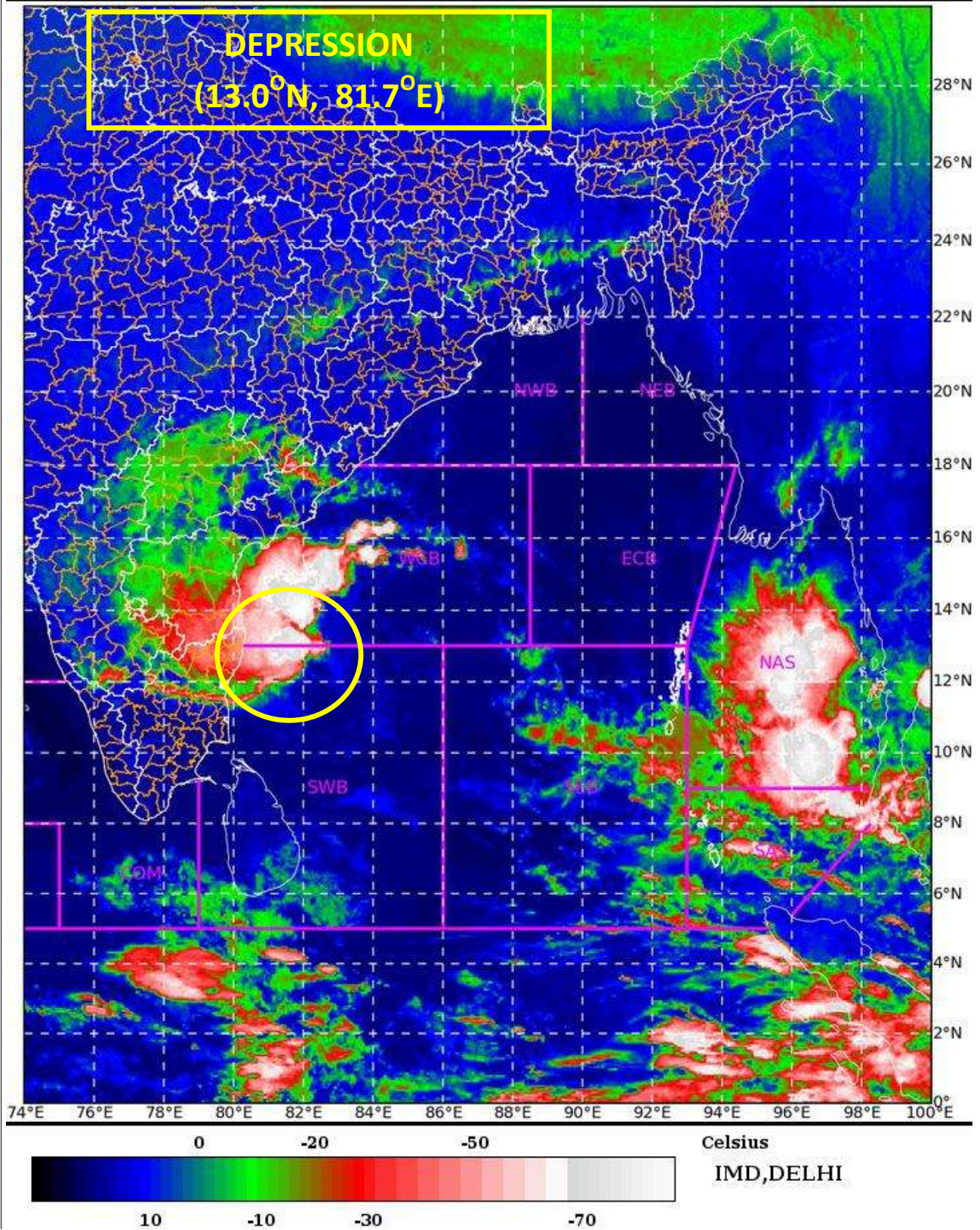
LEGEND: Heavy Rainfall: 64.5 to 115.5mm, **Very Heavy Rainfall:** 115.6 to 204.4mm **Most Places:** more than 76% of total stations, **Isolated Places:** Less than 25% of total

SAT : INSAT-3D IMG 21-11-2022/(1930 to 1956) GMT

IMG_TIR1_TEMP 10.8 um 22-11-2022/(0100 to 0126) IST



L1C Mercator





OBSERVED AND FORECAST TRACK OF DEPRESSION OVER SOUTHWEST AND ADJOINING WEST CENTRAL BAY OF BENGAL BASED ON 1800 UTC OF 21ST NOVEMBER, 2022



DATE/TIME IN UTC

IST=UTC + 0530

L: LOW PRESSURE AREA

WML: WELL MARKED LOW PRESSURE AREA

D: DEPRESSION (17-27 KT)

DD: DEEP DEPRESSION (28-33 KT)

CS: CYCLONIC STORM (34-47 KT)

SCS: SEVERE CYCLONIC STORM (48-63KT)

VSCS: VERY SEVERE CYCLONIC STORM (64-89 KT)

ESCS: EXTREMELY SEVERE CYCLONIC STORM (90-119 KT)

SuCS: SUPER CYCLONIC STORM (≥ 20 KT)

● LESS THAN 34 KT

○ 34-47 KT

○ ≥ 48 KT

— OBSERVED TRACK

— FORECAST TRACK

▲ CONE OF UNCERTAINTY



WARNING

WARNING (TAKE ACTION)
ALERT (BE PREPARED)
WATCH (BE UPDATED)
NO WARNING (NO ACTION)

- Heavy Rain
- Strong Winds
- Frost

- Heavy Snow
- Visibility
- Cold Wave

- Thunderstorm
- Cyclone
- Heat Wave

- Dust Storm
- Squall/ Hail
- Sea State

Fishermen warning graphics



Squally weather with wind speed 40-45 kmph gusting to 55 kmph

Squally wind speed with wind speed 45-55 kmph gusting to 65 kmph

Fishermen are advised not to venture into the marked areas.